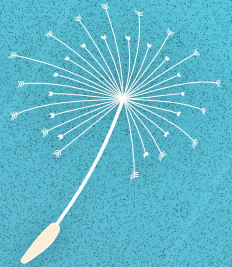


MIDDLE EAST STUDIES | BROWN

Box 1970
Watson Institute
111 Thayer Street, Providence, RI 02912
www.middleeastbrown.org
cmes@brown.edu



DISPLACEMENT
MIDDLE EAST STUDIES | BROWN



BROWN
Institute at Brown for
Environment & Society

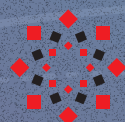
CENTER FOR CONTEMPORARY
South Asia

THE
ANDREW W.

MELLON
FOUNDATION



WATSON INSTITUTE
INTERNATIONAL & PUBLIC AFFAIRS
BROWN UNIVERSITY



MIDDLE
EAST
STUDIES

displacement and
the making of
the modern world

**IV:
DEVELOPMENT-
INDUCED
DISPLACEMENT**

tuesday, dec 6, 2016 4-7:00 p.m.
watson joukowsky forum

registration required

Large parts of the Global South including South Asia are witnessing rapid industrialization and many ventures that fall under the rubric of “development projects,” forcibly displace millions of people.

By bringing together activists and academics on the same platform, this seminar analyzes the ideas that animate these projects and also explore alternatives.

tuesday, december 6

3:45 p.m. registration

Watson Joukowsky Forum

4:00 p.m. – 4:05 p.m. introduction

Vikramaditya Thakur

Mellon Sawyer Postdoctoral Research Associate
on Displacement and the Making of the Modern World, Brown University

4:05 p.m. – 4:45 p.m.

**displacement, dispossession, resettlement and rehabilitation
in the framework of alternative development paradigm**

Bharat Patankar

Activist and Intellectual

4:45 p.m. – 5:30 p.m.

**dispossession without development:
land grabs in neoliberal india**

Michael Levien

Assistant Professor of Sociology, John Hopkins University

5:30 p.m. – 5:55 p.m.

discussion

Discussant Sarah Besky

Assistant Professor of Anthropology and International and Public Affairs
Brown University

5:55 p.m. – 6:30 p.m.

question and answer session

**6:45 p.m. – 8:30 dinner
for speakers and invited guests**

Brown Faculty Club

One Magee Street, Providence, RI